



# Updating your Simply Safe & Suitable template Food Control Plan (FCP) with the July 2018 update

## Why?

Due to changes in the law (as of 18 July 2018), food businesses using a Simply Safe & Suitable template Food Control Plan (FCP) need to update their FCP to make sure they're following the right rules.

## How?

You have 2 options:

- Option 1: Update your FCP with the new pages only. The FCP was designed so you can add and remove pages easily. You can do this by either:
  - requesting an *SS&S update pack* by emailing [foodactinfo@mpi.govt.nz](mailto:foodactinfo@mpi.govt.nz), or
  - downloading your *SS&S update pack* from: [www.mpi.govt.nz/food-safety/food-act-2014/requirements/](http://www.mpi.govt.nz/food-safety/food-act-2014/requirements/)
- Option 2: Download the entire FCP again. You can download the entire updated FCP here: [www.mpi.govt.nz/food-safety/food-act-2014/forms-and-templates/](http://www.mpi.govt.nz/food-safety/food-act-2014/forms-and-templates/). Make sure you have the right pages for your business and fill in all the blanks.

## When?

You must update your FCP now. This will be checked at your next verification visit.

---

For more information on the changes visit:

[www.mpi.govt.nz/news-and-resources/consultations/simply-safe-and-suitable-template-food-control-plan-update/](http://www.mpi.govt.nz/news-and-resources/consultations/simply-safe-and-suitable-template-food-control-plan-update/)

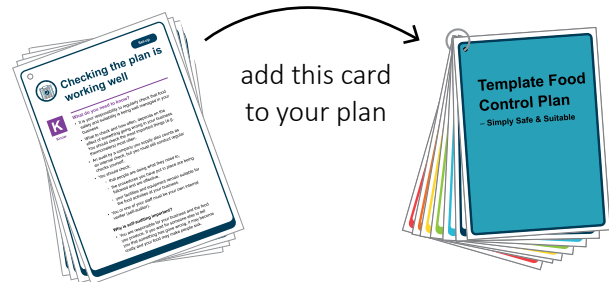
For information on the new allergen, lupin, click [here](#) or visit:

[www.mpi.govt.nz/food-safety/food-act-2014/food-safety-toolkit/](http://www.mpi.govt.nz/food-safety/food-act-2014/food-safety-toolkit/)

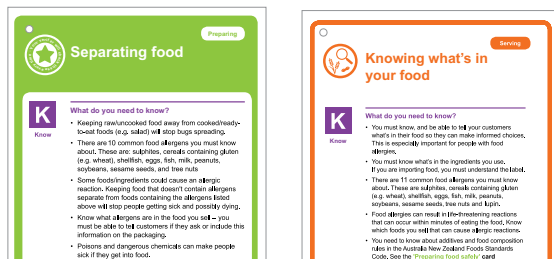
# Instructions for updating your FCP:

Every business must add:

**‘Checking the plan is working well’** into their FCP.

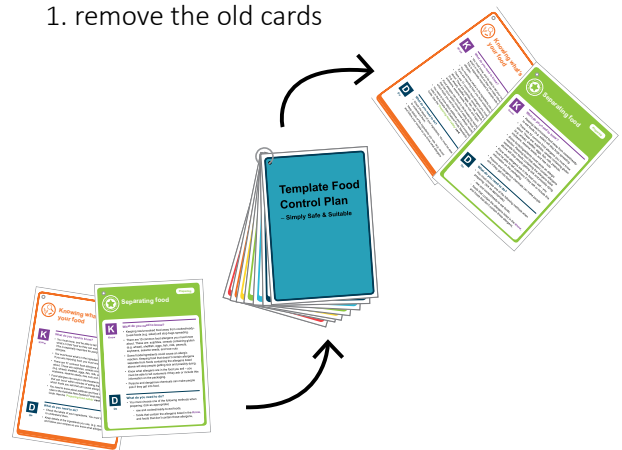


Every business must replace:



These cards have been updated to include the new allergen **lupin**. You need to replace the **‘Separating food’** and/or **‘Knowing what's in your food’** cards with the new cards.

1. remove the old cards

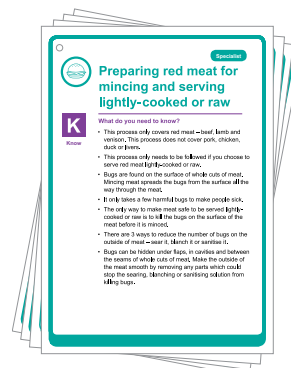


2. add the updated cards

If your business does these activities you must add these cards:



If you are **‘Selling your food to other businesses’** you will need to add this card to your FCP.



If you are **‘Preparing red meat for mincing and serving lightly-cooked or raw’** you will need to add this card to your FCP.

NOTE: if either of these cards don't apply to your business they can be discarded.