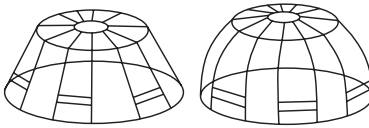


Rock Lobster Restrictions (continued)

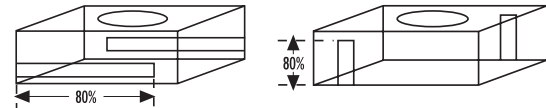
Rock lobster pots

Rock lobster pot means any pot, baited or not, that is capable of catching or holding rock lobster; and includes any other device capable of catching, holding or storing rock lobster. All rock lobster pots must have escape gaps (apertures). These are openings in the pot designed to allow undersized rock lobster to escape. No escape gap shall be incorporated in either the top or the bottom of any pot. Each escape gap must have an inside dimension of at least 54mm x 200mm.

Round or beehive pots: must have at least 3 escape gaps (other than the mouth).



Square or rectangular pots: must have at least 2 escape gaps (other than the mouth) in opposite faces of the pot. Each shall not be less than 80 percent of the height or length of the face of the pot in which the escape gaps are contained.



Mesh pots: any pot constructed entirely of unaltered spot welded mesh with minimum inside dimensions of 54mm x 140mm does not require escape gaps. Mesh pots may be used with covers or liners provided they leave unencumbered at least 80 percent of the surface area of each of 2 opposite sides.

Potting

In areas where potting is permitted the following general restrictions apply:

- individuals may use, set, or possess, up to three pots in any one day;
- all pots and surface floats must be clearly and permanently marked with the fisher's surname and initials;
- two or more individuals fishing from a vessel may use, set, or possess up to six pots in any one day provided they have their name on the pots and that each person is using no more than three of the pots;
- bobs and ring pots may be used to catch rock lobster but all other requirements such as marking and pot limits apply;
- pots used to catch rock lobster have specific escape gap requirements – see above;
- species specific pots (cod pots, crab pots etc) can be used. They are exempt from escape gap requirements but all other requirements (such as marking and pot limits) remain.

Closures and Restrictions

Restricted areas

Restricted areas are areas where the use of particular fishing methods (e.g. set nets) is restricted or where catch limits may be different. Some restricted areas are listed below. However, these are only a guide. Check for local restrictions and recent closures by contacting your nearest MPI Fisheries Compliance Office.

Scallop closed until further notice.

Blue Cod Restricted Areas

Area 1: Challenger East Area (includes Marlborough Sounds Area):

Daily Limit: 2 per fisher.

Size Limit: 33cm minimum.

Closed Season (Marlborough Sounds Area only) 1 September – 19 December inclusive every year.

You can possess up to 4 blue cod in the Challenger East Area if you can prove that no more than 2 blue cod were taken on any one day from the Challenger East Area.

Area 2: Challenger Kahurangi

Daily Limit: 10 per fisher.

Size Limit: 33cm minimum.

You can possess up to 20 blue cod in the Challenger Kahurangi Area if you can prove that no more than 10 blue cod were taken on any one day.

Both areas – Challenger Kahurangi and Challenger East

- Must be landed whole or gutted only.
- Blue cod cannot be filleted at sea unless you eat them immediately. Any blue cod eaten form part of your daily limit.
- Fishers staying at baches and aboard vessels are not exempt from these regulations and may only land or transport by sea, whole or gutted blue cod on any one day.

Challenger East only

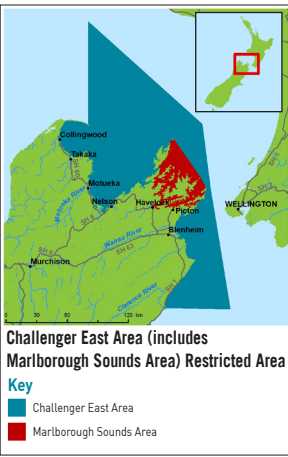
During the Closed Marlborough Sounds season, you may transport blue cod from other areas into the Marlborough Sounds as long as you can prove where the fish were taken from.

When fishing in the Marlborough Sounds Area, use no more than 2 hooks per fishing line when fishing for any finfish species (Excluding Longlines).

Additional restrictions: You must not:

- fillet blue cod, unless you eat them immediately. Any blue cod eaten form part of your daily limit;
- during the closed Marlborough Sounds season you may transport blue cod from the Challenger East Area into the Marlborough Sounds Area as long as you can prove where the fish were taken from;
- fishers staying in baches and aboard vessels are not exempt from these regulations and may only land or transport by sea, whole or gutted blue cod on any one day;

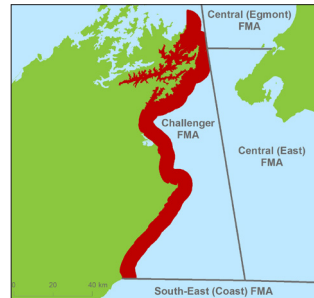
- when fishing in the Marlborough Sounds Area use no more than 2 hooks per fishing line, when fishing for any finfish species (excluding longlines).



Set net restrictions

Map 1: Set netting is totally prohibited from Cape Jackson to the Clarence River (extends out to 4 nautical miles and includes the entire Queen Charlotte Sound, Tory Channel, Port Underwood, Cloudy Bay, Clifford Bay, and Cape Campbell areas).

Map 2: Set netting is totally prohibited on the West Coast from Farewell Spit to Awarua Point (extends out to 2 nautical miles). Check the regulations for co-ordinates.



Map 1: Set Net Closed Area



Map 2: Set Net Closed Area

- **Exemption:** Queen Charlotte Sound inside a line from West Head Point (Ruakaka Bay) to Deiffenbach Point – refer to the red area on **Map 3**. Applies between 1 April and 30 September for Flatfish set nets only (a net that is 9 meshes deep or less, is anchored at each end, does not exceed a total length of 60 metres, has a mesh size greater or equal to 100mm and a monofilament diameter less than 0.35mm).
- **Exemption:** East Coast.
- Fishers must stay with their nets at all times and set no more than 200m from shore, between Cape Jackson and Rarangi Port Underwood and then Cape Campbell to Needles Point between 1 January – 30 April inclusive. (See purple line on **Map 3**).

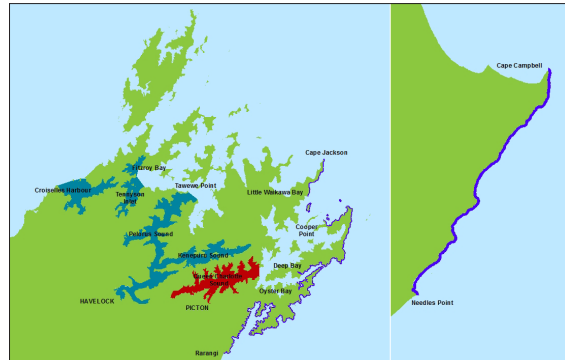
Map 3: Set netting may only be undertaken using set nets with a net mesh size greater than or equal to 100mm which do not exceed 9 meshes in height and must be set in direct contact with the seabed. These restrictions apply to the following (all blue areas on **Map 3**):

Pelorus Sound: inside a line from Tawero Point to Opani-Aputa Point.

Tennysen Inlet and Hallam Cove: inside a line from Sheep Point to Camel Point to Cregoe Point.

Croisilles Harbour: inside a line from Cape Soucis, outside the Islands to Kakaho Point.

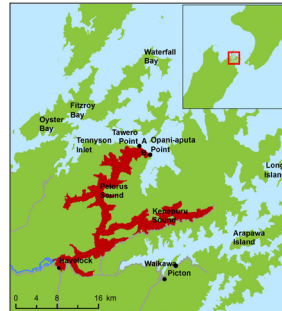
Within Kenepuru Sound: set netting is totally prohibited from 1 October to 31 March inclusive.



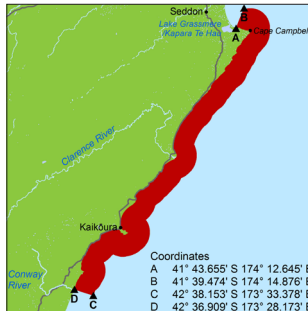
Map 3: Set Net Restricted Areas

Set line restricted areas

Map 4: Possession and use of set lines is prohibited in Pelorus Sound inside a line from Tawero Point to Opani-Aputa Point and in Kenepuru Sound.



Map 4: Set Line Restricted Areas



Map 5: Marfells Beach to Conway River closed area

Kaikōura earthquake shellfish closure

Map 5: The area from Marfells Beach to the Conway River is closed to the taking of shellfish and seaweed species (excluding rock lobster and scampi). This closure is necessary for the area to recover from the Kaikōura earthquake on 14 November 2016.

Closed Areas

Closed areas are areas where no fishing is allowed. These may be closed by MPI as prohibited areas or by the Department of Conservation (DOC) as marine reserves. For full details of marine reserves contact DOC.

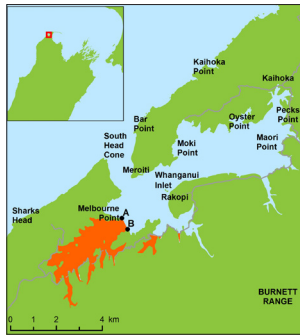
Challenger FMA closed areas include: Long Island Marine Reserve, Tonga Island Marine Reserve, Horoirangi Marine Reserve, Whanganui/Westhaven Inlet Marine Reserve and in Double Cove, Queen Charlotte Sound.

Maud Island Area

Closed year round. No finfish of any species can be taken.



Double Cove Finfish Closed Area



Westhaven Inlet Marine Reserve



Horoirangi Marine Reserve



Long Island Marine Reserve



Tonga Island Marine Reserve



Area 2: Maud Island Closed Area

Poacher Prevention

MPI fisheries compliance is responsible for protecting local fisheries and stopping illegal activities such as poaching. To do this, MPI needs you to report any suspicious or illegal activity in your area.

If you see people acting illegally, taking more than their daily limit or undersized fish or selling or trading their catch, please report it. Any information provided stays completely confidential.

Report poaching, suspicious or illegal activity – call 0800 4 POACHER (0800 476 224).

New Zealand's Fishing Rules at Your Fingertips

This brochure is a summary of the recreational fishing rules for the Challenger Fishery Management Area (FMA). It is a guide only and may not include all local restrictions and rules or any changes made since it was printed. To keep up to date, check the rules each time you fish. It is illegal to sell or trade your catch.

Check the rules

Check the rules using our FREE services:

our free NZ Fishing Rules **app** by texting the word 'app' to 9889. The app works even when you have no coverage.

- **Free text** the name of the species you are fishing for (e.g. rock lobster) to **9889** and receive legal size and bag limit via return text.
- Visit www.fisheries.govt.nz/rules
- Email recfishingteam@mpi.govt.nz to subscribe to fishing related updates in your area.
- Follow us on Facebook



MPI Fisheries – Northland
MPI Fisheries – Nelson/Marlborough/Kaikoura
MPI Fisheries – Canterbury/Westland
MPI Fisheries – Otago/Southland



Contact your Local Office

Nelson [03] 548 1069

118 Vickerman Street, Nelson

Blenheim [03] 579 1088

Marlborough Research Centre, Grovetown Park, State Highway 1, Blenheim



Fisheries New Zealand

Tini a Tangaroa

Recreational Fishing Rules

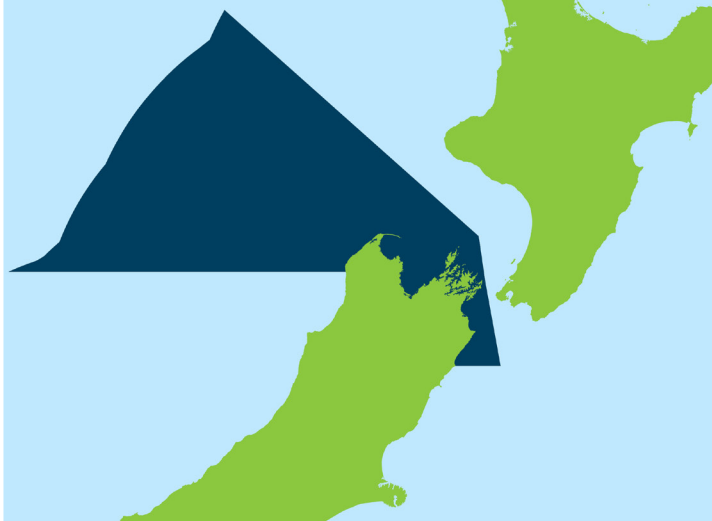
CHALLENGER

(East and Kahurangi)

Effective from: July 2020 subject to change without notice.

TELSON CLIPPING FOR ROCK LOBSTER

CHALLENGER KAHURANGI BLUE COD AREA



WANT THE RULES ON YOUR PHONE?

Use our free-text service.

Download our free smartphone app.

SEE BACK FOR DETAILS.